

# Series B

## Roller Doors



Airport Doors' Roller Doors have a unique rigid profile enabling added strength and durability. Series B Roller Doors are primarily used for large openings such as garages, carports and lane ways as well as light commercial purposes such as mini storage warehouses and workshops.

### FEATURES

- Economical
- Smooth operation
- Low maintenance
- Extra rigid curtain profile

### DOOR DIMENSIONS

- Maximum Height: 3300mm
- Maximum Width: 5100mm

**NOTE:** Door overlaps opening width 50mm on each side.

### RECOMMENDED SPECIFICATIONS

Series B steel Roller Door with standard centre lift-lock as manufactured by Airport Doors. Balanced by torsion springs, the Roller Door operates by means of a flexible corrugated curtain, which guided by vertical steel door guides, winds onto an overhead drum.

# Series B

## Roller Doors

### CURTAIN

The Roller Door curtain is manufactured from a continuous, roll-formed, deep profile steel sheet, lock seamed together. The 0.425mm thick steel sheet is fitted with a nylon felt strip which runs down both sides of the curtain to provide smooth operation.

### FINISH

Roller Doors are available in a wide range of pre-painted steel (e.g. Colorbond) colours. See the Airport Doors website or contact Airport Doors for current colour availability.

### BOTTOM RAIL

The Roller Door bottom rail reinforces the roller door curtain and is manufactured from a durable extruded aluminium section fitted with a PVC bottom weather seal. The weather seal aids in minimising leaves and rain from entering under the door.

### ADDITIONAL DOOR SEAL (OPTIONAL)

An additional brush seal can be provided to seal the working clearance gap at the lintel. Seals for fire risk areas are designed to prevent embers from entering the garage and are manufactured from a flame retardant material. Door seals also help to reduce dust and dirt from entering the garage.

### DOOR GUIDES

The door guides consist of a specially roll-formed, galvanised steel channel section with a depth of 50mm.

### DRUM & SPRING ASSEMBLY

The drum consists of specially designed drum wheels which are manufactured from high grade glass-filled nylon for durability and hard wearing. Specially designed helical coil torsion springs (with 20,000 lifecycle) are attached to the drum wheel and anchored to the drum axle. The door curtain fully wraps around the drum wheel, enclosing the drum springs.

### DRUM SUPPORT BRACKETS

Series B drum support brackets are manufactured from heavy-duty galvanised steel angle. They are designed to be fixed to a solid wall with masonry anchors or welded to heavy-duty steel work.

### FIXING REQUIREMENTS

The building construction (typically solid brick, concrete or steel) must be structurally sound and have adequate strength to support the Roller Door and its fixing requirements. Consult Technical Sales for further details.

### LOCKING

A centre lift-lock, keyed on the external face and free latched on the internal face, is fitted to the door at waist height. In a counter top application the locking facility can (when specified) be fitted to the bottom of the curtain. Alternatively, Series B Roller Doors can be supplied with a pair of shoot bolt locks (internally or externally as specified) fitted to the bottom rail as standard or at waist height when specified (padlocks not included). NOTE: Shoot bolt locks are not recommended for doors that are motorised. Special locks such as warehouse locks may also be available upon specification.

### OPERATION

Roller Doors consist of a continuous corrugated steel curtain that winds onto an overhead drum and is guided by vertical steel door guides. Roller Doors are typically installed behind-fix.

### HAND OPERATION

Series B Roller Doors can be hand operated, however for added convenience motorisation is recommended.

### MOTORISATION

For convenience and ease of operation Series B Roller Doors can be motorised using a 24DC/240v operator with remote control hand transmitters and optional wall button. Standard Roller Door Operators come standard with an emergency manual release mechanism in case of power outage.

For further information see Door Operators & Accessories.

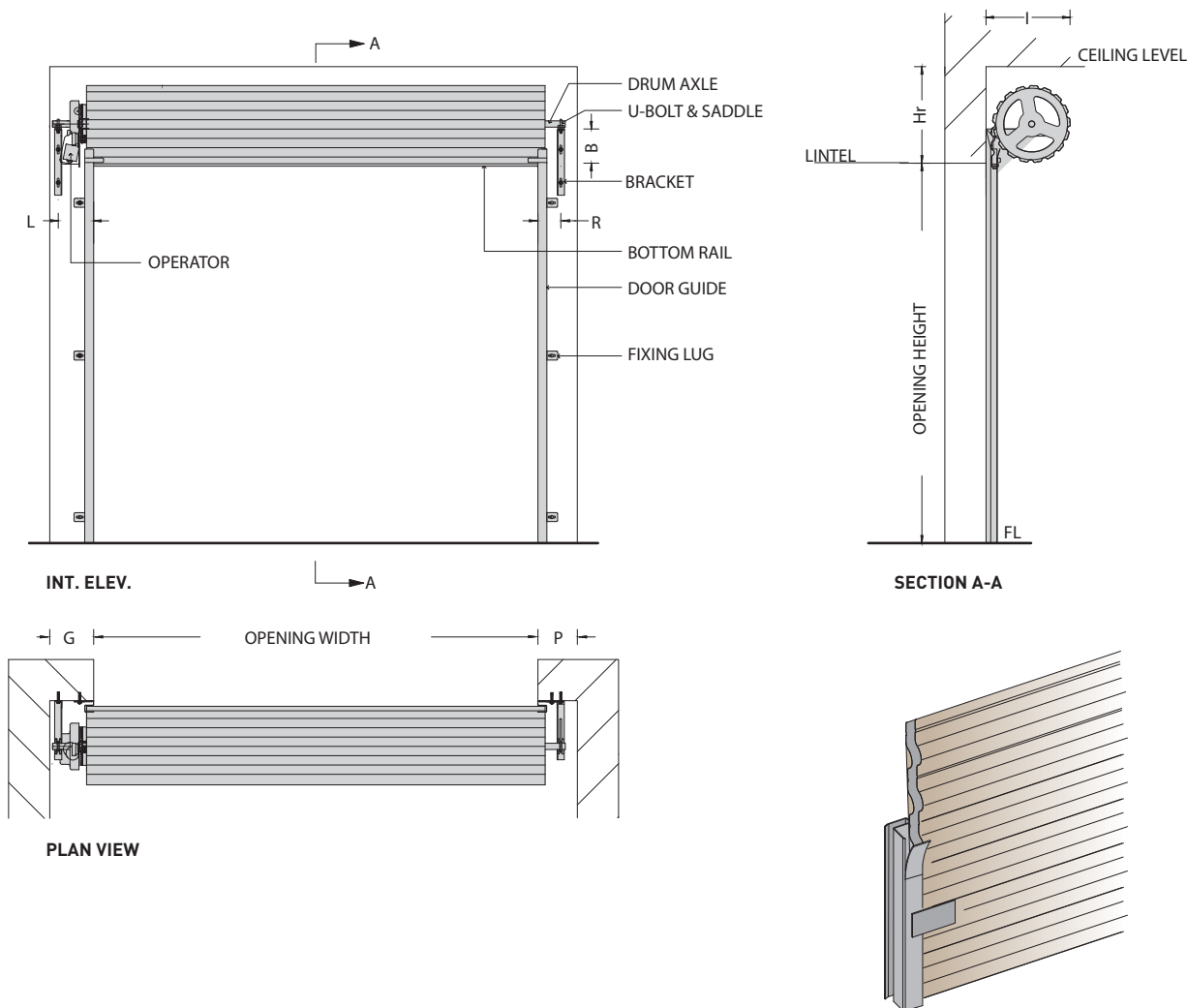
### OPTIONS

- Additional door seals
- Tapered bottom
- Reverse roll
- Reverse colour



# Series B

## Technical Specs: Roller Doors



CLEARANCE DETAILS								
HEIGHT UP TO	Hr	B	I	OPERATION	DRIVEN END		PLAIN END	
					G	L	P	R
1850	490	250	470	HAND OPERATION	P	R	150	100
2600	500	255	480					
3000	550	280	530	MOTORISATION	220	200	150	100

### Notes:

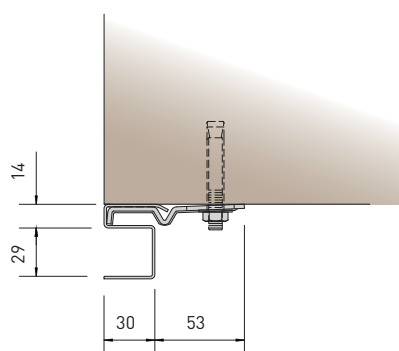
- Where Roller Doors are to be fitted in a cavity bulkhead situation, due allowances should be made to dimension "I" (600mm clearance is required for fixing and lifting purposes).
- WEIGHT - approximately 10Kg/m<sup>2</sup>
- B dimension applies when Hr dimension is as per specification.
- Hr dimension is recommended so that the door in the fully open position, does not protrude into the opening.

# Door Guides

## Technical Specs: Roller Doors

### SERIES A, SERIES B & SERIES C STANDARD DOOR GUIDES

**SERIES A**



**SERIES B & C**

