

Series C

Roller Doors



Airport Doors' Roller Doors have a unique rigid profile which provides additional strength and durability. Series C Roller Doors comprise manual chain operation and are primarily used for commercial and light industrial purposes such as factories and warehouses.

FEATURES

- Economical
- Smooth operation
- Low maintenance
- Extra rigid curtain profile

DOOR DIMENSIONS

- Maximum Height: 4200mm*
- Maximum Width: 5100mm*

*Total size must not exceed 17m².

NOTE: Door overlaps opening width 50mm on each side.

RECOMMENDED SPECIFICATIONS

Series C steel Roller Door with chain operation as manufactured by Airport Doors. Balanced by torsion springs, the Roller Door operates by means of a flexible corrugated curtain, which guided by vertical steel door guides, winds onto an overhead drum.

Series C

Roller Doors

CURTAIN

The Roller Door curtain is manufactured from a continuous, roll-formed, deep profile steel sheet, lock seamed together. The 0.425mm thick steel sheet is fitted with a nylon felt strip which runs down both sides of the curtain to provide smooth operation.

FINISH

Roller Doors are available in a wide range of pre-painted steel (e.g. Colorbond) colours. See the Airport Doors website or contact Airport Doors for current colour availability.

BOTTOM RAIL

The Roller Door bottom rail reinforces the roller door curtain and is manufactured from a durable extruded aluminium section fitted with a PVC bottom weather seal. The weather seal aids in minimising leaves and rain from entering under the door.

ADDITIONAL DOOR SEAL (OPTIONAL)

An additional brush seal can be provided to seal the working clearance gap at the lintel. Seals for fire risk areas are designed to prevent embers from entering the garage and are manufactured from a flame retardant material. Door seals also help to reduce dust and dirt from entering the garage.

DOOR GUIDES

The door guides consist of a specially roll-formed, galvanised steel channel section with a depth of 50mm.

DRUM & SPRING ASSEMBLY

The drum consists of specially designed drum wheels which are manufactured from high grade glass-filled nylon for durability and hard wearing. Specially designed helical coil torsion springs (with 20,000 lifecycle) are attached to the drum wheel and anchored to the drum axle. The door curtain fully wraps around the drum wheel, enclosing the drum springs.

DRUM SUPPORT BRACKETS

Series C drum support brackets are manufactured from galvanised steel angle. They are designed to be fixed to a solid wall with masonry anchors or welded to heavy-duty steel work.

FIXING REQUIREMENTS

The building construction (typically solid brick, concrete or steel) must be structurally sound and have adequate strength to support the Roller Door and its fixing requirements. Consult Technical Sales for further details.

LOCKING

Standard Series C locking facility consists of a steel chain lock, or when specified an additional shoot bolt lock can be fixed to the bottom rail on the opposite side to the chain (padlocks not included). NOTE: Chain locks and shoot bolt locks are not typically fitted on doors that are motorised.

OPERATION

Roller Doors consist of a continuous corrugated steel curtain that winds onto an overhead drum and is guided by vertical steel door guides. Roller Doors are typically installed behind-fix.

CHAIN OPERATION

Chain operation works by means of a gearing assembly and chain attached internally to the left or right side of the drum. Direct chain drive with chain wheel attached to the drum is used for doors up to 3300 high or doors over 14m². For ease of operation, larger doors are fitted with planetary reduction gearing. NOTE: Planetary reduction gearing can also be used as an alternative to direct chain drive for smaller doors when specified.

MOTORISATION

For convenience and ease of operation Series C Roller Doors can be motorised via a (industrial) geared electric motor with standard reversing starter push-button station (control box) and emergency hand chain operation in case of a power outage. The standard push-button station offers 'Up', 'Down' and 'Stop' functions.

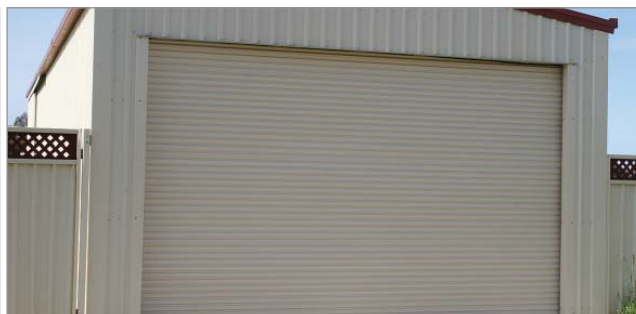
Operator selection is dependent on availability of power, door usage and door access requirements. Motorisation is available in three-phase (415v) or single-phase (240v) power.

The provision of adequate mains power supply and isolator or GPO (as required) to motor location is the responsibility of the client. Wiring from the isolator and commissioning of the door, motor controllers and any ancillary hardware is by client, unless otherwise stated in writing.

Optional extras, such as access control accessories (e.g. remote control, key switches etc.) and photo electric beams for added safety are available upon specification. For further information see Door Operators & Accessories.

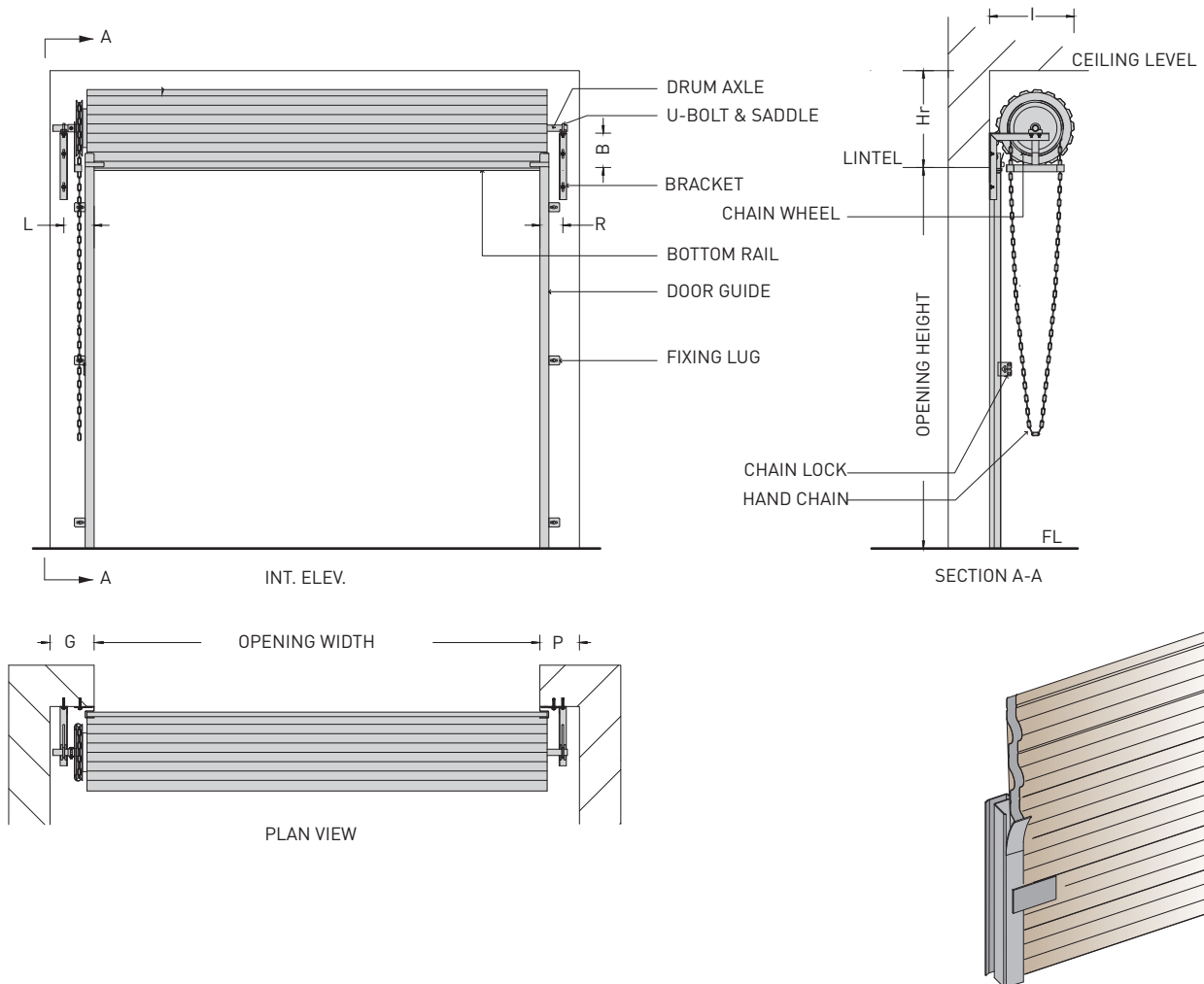
OPTIONS

- Additional door seals
- Tapered bottom
- Reverse roll
- Reverse colour



Series C

Technical Specs: Roller Doors



CLEARANCE DETAILS

HEIGHT UP TO	Hr	B	I	OPERATION	DRIVEN END		PLAIN END	
					G	L	P	R
2600	500	255	480	CHAIN OPERATION	230	175	150	100
3300	550	280	530					
4300	590	300	570	MOTORISATION	500	145	150	100

Notes:

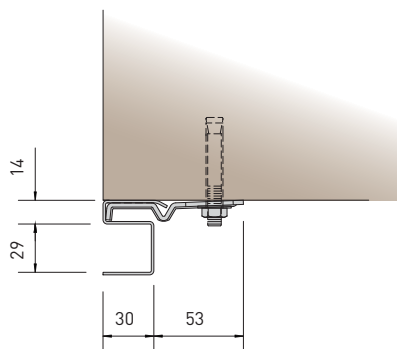
- Where Roller Doors are to be fitted in a cavity bulkhead situation, due allowances should be made to dimension "I" (700mm clearance is required for fixing and lifting purposes).
- WEIGHT - approximately 10Kg/m²
- Chain operation is normally fitted on L/H side (R/H side is available when specified)
- B dimension applies when Hr dimension is as per specification.
- Hr dimension is recommended so that the door in the fully open position, does not protrude into the opening.

Door Guides

Technical Specs: Roller Doors

SERIES A, SERIES B & SERIES C STANDARD DOOR GUIDES

SERIES A



SERIES B & C

