

- 1 WHERE ROLLER DOORS ARE TO BE INSTALLED ALL DOORWAY OPENINGS, SHOULD BE KEPT CLEAR OF ANY OBSTRUCTION (E.G. BEAMS, PIPES, ETC . . .)
- 2 WHERE DOORS ARE TO BE FITTED IN A CAVITY BULKHEAD SITUATION DUE ALLOWANCES SHOULD BE MADE TO DIMENSION "I" - 600mm CLEAR - FOR FIXING AND LIFTING PURPOSES.



- 3 ON SERIES 'A & B' DOORS WHEN THE DOOR IS FULLY OPEN, THE OPENING HEIGHT IS REDUCED BY 65mm
- 4 ON SERIES 'C' DOORS THE BOTTOM OF THE CURTAIN IS FLUSH WITH THE LINTEL, WHERE HEADROOM IS AVAILABLE
- 5 - REMOTE CONTROLLED DOORS - ADDITIONAL SIDEROOM IS REQUIRED TO FIT UNIT TO THE DOOR AT ONE END OF THE CURTAIN DRUM.
SIDEROOM - SERIES 'A' - 200mm
 - SERIES 'B' - 225mm
 - SERIES 'C' - 250mm
- 6 WEIGHT APPROXIMATELY 10Kg/M2



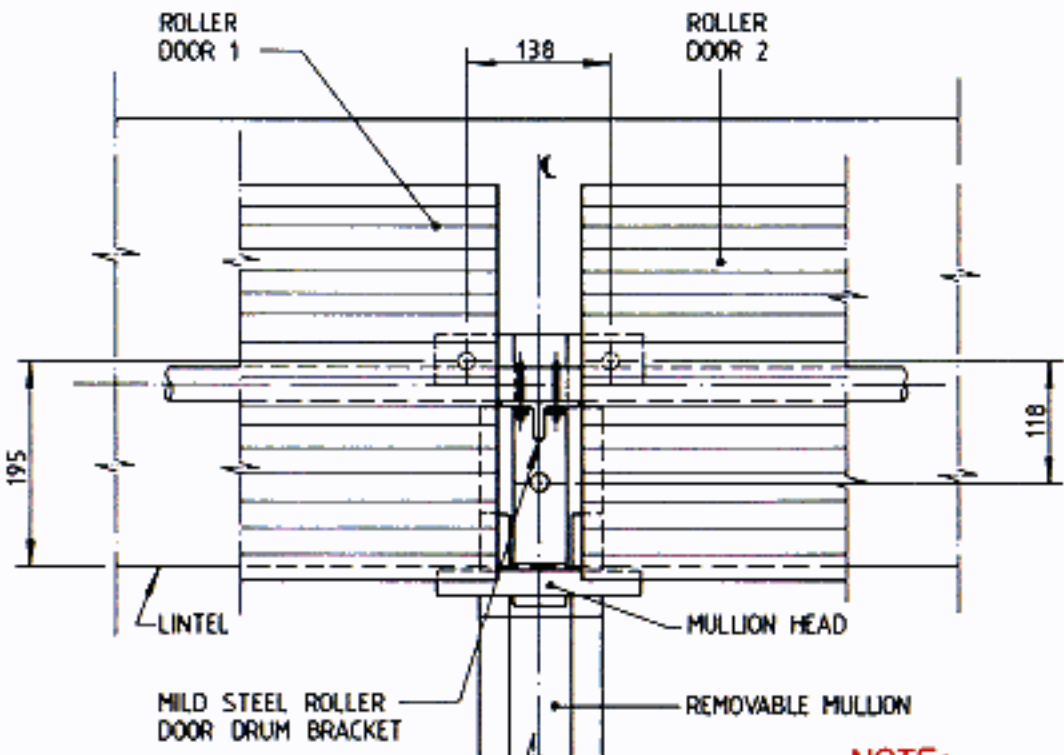
SERIES 'C' DOORS WHEN IN FULLY OPEN POSITION, THE BOTTOM RAIL FINISHES FLUSH WITH THE BOTTOM OF LINTEL.

RESIDENTIAL - COMMERCIAL

| HAND OPERATED | | MARK : (mm) | | | | | | |
|---------------|------------------|-------------|-----|-----|-----|-----|-----|-----|
| TYPE: | SIZE H. x W. (M) | P | G | L | R | B | Hr | I |
| SERIES 'A' | 3.0 x 3.0 | 100 | 100 | 78 | 78 | 150 | 380 | 440 |
| SERIES 'B' | 2.5 x 5.0 | 125 | 125 | 102 | 102 | 250 | 540 | 520 |

LIGHT INDUSTRIAL

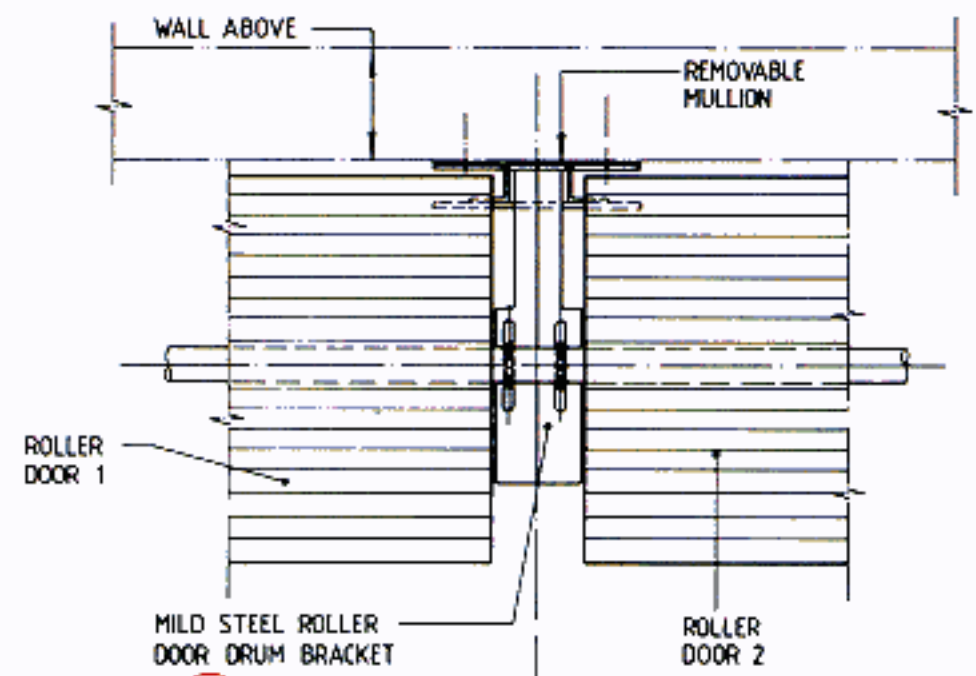
| CHAIN OPERATED - NORMALLY L/H SIDE (R/H SIDE AVAILABLE IF SPECIFIED) | | MARK : (mm) | | | | | | |
|--|------------------|-------------|-----|-----|-----|-----|-----|-----|
| TYPE: | SIZE H. x W. (M) | P | G | L | R | B | Hr | I |
| SERIES 'C' | 5.1 x 3.8 | 125 | 200 | 175 | 102 | 300 | 580 | 540 |



DETAIL (C)



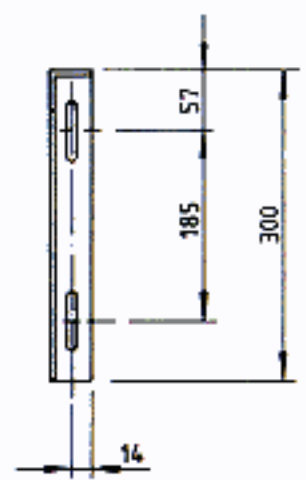
DETAIL (B)



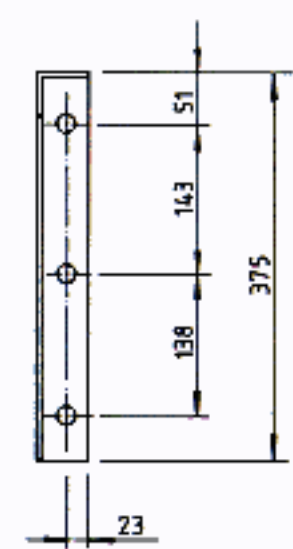
DETAIL (A)

NOTE:

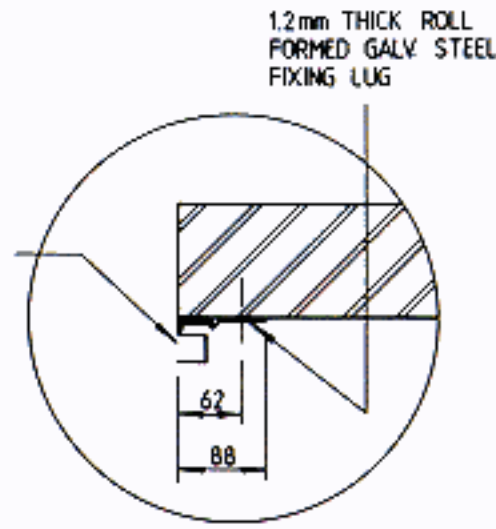
1. WHERE CENTRE MULLION IS USED IT SHOULD BE OF SUFFICIENT SIZE TO CARRY WEIGHT OF DOORS WITHOUT TWIST OR DEFLECTION (WIDTHS OF MULLIONS VARY DEPENDING ON DOORS SIZES & WEIGHT)
2. SERIES "A" CENTER MULLION SHOWN.



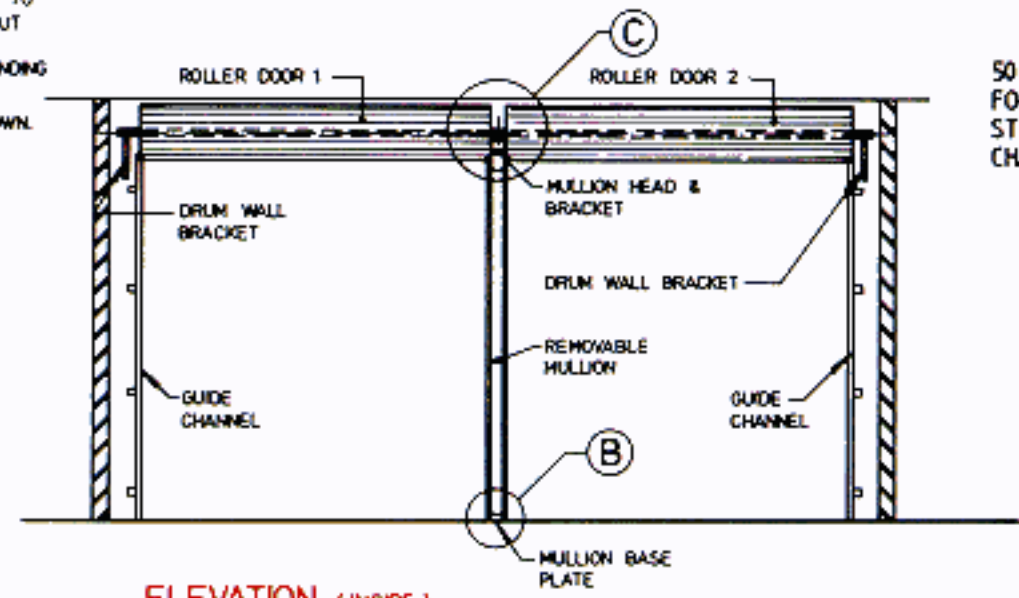
SERIES "A" DRUM WALL BRACKET
40 x 40 x 5 M.S. ANGLE



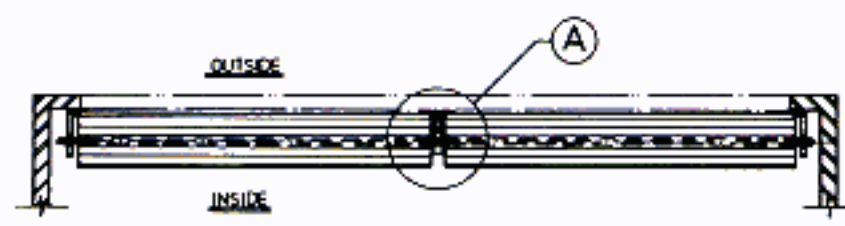
SERIES "B" & "C" DRUM WALL BRACKET
51 x 51 x 5 M.S. ANGLE



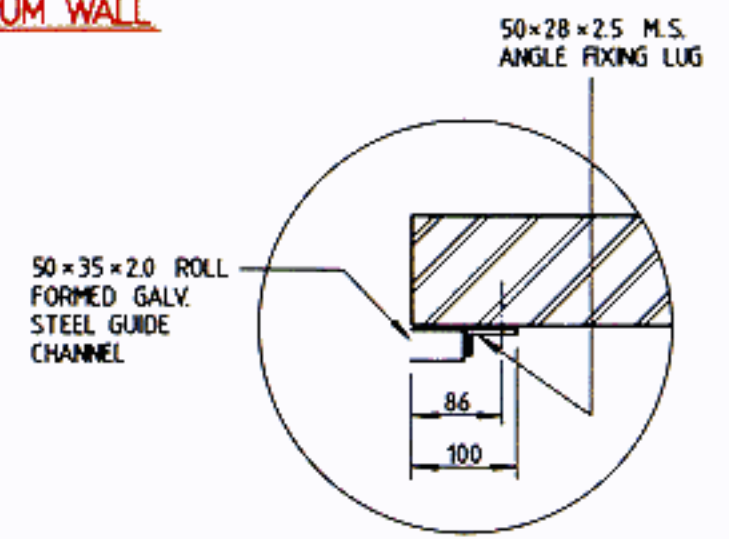
SERIES "A" GUIDE CHANNEL



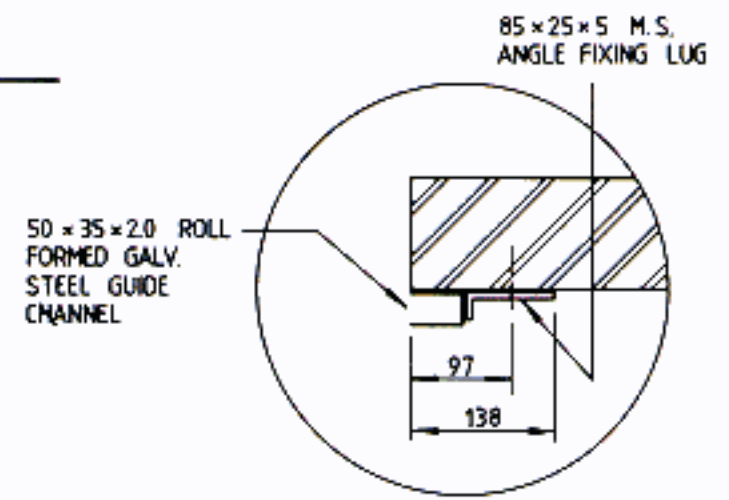
ELEVATION (INSIDE)



PLAN (2 DOORS OPENING)



SERIES "B" GUIDE CHANNEL



SERIES "C" GUIDE CHANNEL