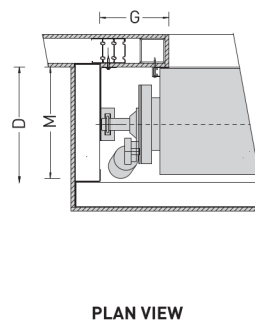
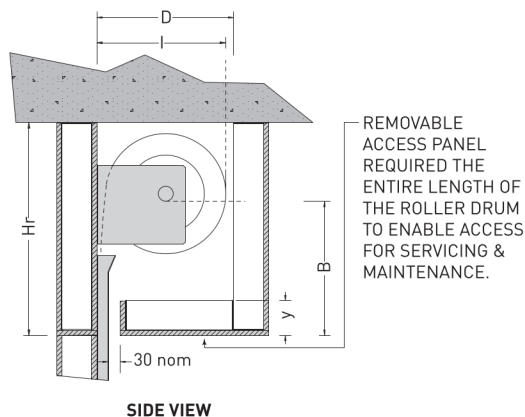


# Bulkhead

## Technical Specs: Aluminium & Timber Roller Shutters, & Aluminium Security Roller Grille



### Notes:

- Bulkhead to be supplied and installed by CLIENT after installation of roller shutter.
- Design is indicative only.
- Adequate structural support to hold door weight and for fixing of drum support brackets and door guides to be provided by client.
- Clearances below are based on Motorised doors. For Chain and Hand operated doors refer to product Technical Specs for dimensions of 'G' & 'P'
- Sufficient access must be made available for future maintenance or servicing. If insufficient access is provided, Airport Doors will not be held accountable for any costs associated with the inability to maintain or service the door.

### SERIES 25

| BULKHEAD CLEARANCE DETAILS |         |     |     |     |     |     |
|----------------------------|---------|-----|-----|-----|-----|-----|
| HEIGHT UP TO               | Hr      | B   | I   | D   | M   | G   |
| 1100                       | 500 + y | 280 | 280 | 500 | 290 | 250 |
| 1500                       | 500 + y | 300 | 300 | 500 | 305 | 250 |
| 2100                       | 500 + y | 320 | 340 | 500 | 320 | 250 |

### SERIES 63

| BULKHEAD CLEARANCE DETAILS |         |     |     |     |     |     |
|----------------------------|---------|-----|-----|-----|-----|-----|
| HEIGHT UP TO               | Hr      | B   | I   | D   | M   | G   |
| 1100                       | 500 + y | 295 | 260 | 500 | 290 | 250 |
| 1700                       | 500 + y | 310 | 290 | 500 | 305 | 250 |
| 2500                       | 500 + y | 340 | 350 | 500 | 335 | 250 |
| 3000                       | 500 + y | 350 | 370 | 500 | 350 | 250 |

### CLEARLITE & ALUMINIUM SECURITY ROLLER GRILLE

| BULKHEAD CLEARANCE DETAILS |         |     |     |     |     |     |
|----------------------------|---------|-----|-----|-----|-----|-----|
| HEIGHT UP TO               | Hr      | B   | I   | D   | M   | G   |
| 1100                       | 500 + y | 330 | 330 | 500 | 310 | 250 |
| 1700                       | 540 + y | 340 | 350 | 500 | 335 | 250 |
| 2500                       | 580 + y | 360 | 390 | 500 | 355 | 250 |
| 3000                       | 580 + y | 360 | 390 | 500 | 355 | 250 |

### PANORAMA

| BULKHEAD CLEARANCE DETAILS |         |     |     |     |     |     |
|----------------------------|---------|-----|-----|-----|-----|-----|
| HEIGHT UP TO               | Hr      | B   | I   | D   | M°  | G   |
| 2100                       | 800 + y | 610 | 430 | 700 | 600 | 500 |
| 3000                       | 840 + y | 635 | 480 | 700 | 600 | 500 |
| 3600                       | 875 + y | 660 | 530 | 700 | 600 | 500 |

M° - Depth at Motor location. Refer Technical Specifications.

### SUPA SLAT

| BULKHEAD CLEARANCE DETAILS |         |     |     |     |     |     |
|----------------------------|---------|-----|-----|-----|-----|-----|
| HEIGHT UP TO               | Hr      | B   | I   | D   | M°  | G   |
| 2100                       | 870 + y | 610 | 490 | 700 | 600 | 500 |
| 3000                       | 920 + y | 635 | 530 | 700 | 600 | 500 |
| 3600                       | 950 + y | 660 | 560 | 700 | 600 | 500 |
| 4200                       | 970 + y | 665 | 580 | 700 | 600 | 500 |

### TIMBER ROLLER SHUTTER

| BULKHEAD CLEARANCE DETAILS |         |     |     |     |     |     |
|----------------------------|---------|-----|-----|-----|-----|-----|
| HEIGHT UP TO               | Hr      | B   | I   | D   | M   | G   |
| 1100                       | 510 + y | 340 | 270 | 500 | 295 | 250 |
| 1700                       | 530 + y | 355 | 310 | 500 | 315 | 250 |
| 2300                       | 560 + y | 370 | 360 | 500 | 325 | 250 |

M° - Depth at Motor location. Refer Technical Specifications.



**ASSA ABLOY**

[www.airportdoors.com.au](http://www.airportdoors.com.au)

**VIC & TAS**  
69-75 High Street  
Melton VIC  
PO Box 330  
Melton VIC 3337  
T: (03) 9971 1444  
F: (03) 9971 1466

**SA & NT**  
16 Krawarri Street  
Lonsdale SA  
PO Box 487  
Morphett Vale SA 5162  
T: (08) 8326 0466  
F: (08) 8384 2501

**WA**  
5 Keates Road  
Armadale WA  
PO Box 906  
Armadale WA 6992  
T: (08) 9399 5790  
F: (08) 9399 5702

© Copyright 2015 Czapp Pty Ltd trading as Airport Doors. In line with Airport Doors' research and development program, Airport Doors reserves the right to change specifications at any time without notice.