

Series 25

Aluminium Roller Shutters



The Series 25 aluminium Roller Shutter is designed to provide security for small openings such as counters, kiosks, bars, cabinets and trucks and is ideal for applications where headroom is limited.

FEATURES

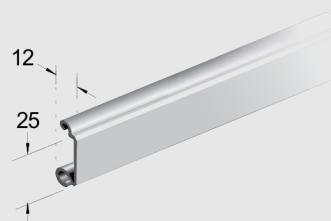
- Light and easy to operate
- Interlocking aluminium slats
- Minimal headroom required

DOOR DIMENSIONS

- Maximum Height: 2100mm*
 - Maximum Width: 2100mm*
- *Total size must not exceed 4m².

RECOMMENDED SPECIFICATIONS

Series 25 aluminium Roller Shutter with 25mm high slats in 1.4mm thick material as manufactured by Airport Doors. The Roller Shutter operates by means of a flexible curtain made of interlocking aluminium slats winding onto an overhead drum and guided in aluminium door guides.



© Copyright 2015 Czapp Pty Ltd trading as Airport Doors. In line with Airport Doors' research and development program, Airport Doors reserves the right to change specifications at any time without notice.

Series 25

Aluminium Roller Shutters

CURTAIN

The Series 25 curtain is manufactured from 25mm high by 1.4mm thick specially extruded interlocking aluminium slats. Alternating slats are fitted with nylon end clips to prevent lateral movement of the curtain and to ensure smooth operation.

FINISH

Aluminium slats are available in natural anodised as standard and can be colour anodised or powder coated when specified.

BOTTOM RAIL

The bottom rail is manufactured from specially extruded aluminium section and is fitted with a PVC bottom weather-seal.

DOOR GUIDES

Series 25 standard door guides are manufactured from 1.5mm thick "h" profile extruded aluminium channel. A felt cushioning seal is inserted into the door guide to facilitate smooth operation. Where the opening is uneven or not plumb, door guides are used in conjunction with 'take-up' channels (limitations may apply).

DRUM & SPRING ASSEMBLY

The drum is manufactured from either mild steel tube or galvanised spiral duct tube revolving around a central steel axle and encasing helical torsion springs matched to suit door size and weight. The drum is attached to nylon drum wheels, which provide bearing support to the shaft, and completely conceal the springs. The drum is designed to provide minimal deflection over the door width.

DRUM SUPPORT BRACKETS

Series 25 Roller Shutter drum support brackets are manufactured from mild steel plate with a minimum thickness of 3mm and are fixed to the wall using masonry anchors or hex head screws, or as specified for steel work. The drum support brackets are prime-coated.

FIXING REQUIREMENTS

The building construction (typically timber or steel) must be structurally sound and have adequate strength to support the Roller Shutter and its fixing requirements. Consult manufacturer for further details.

LOCKING

Hand operated Series 25 Roller Shutters will be fitted as standard with a low profile lock which is identically keyed on both sides. The lock will be fitted to the bottom rail as standard and allow full opening height.

Alternatively, master key locking is also available upon specification. Master key is available as key operated from outside and 'dead' latch on inside. Where required 'free' (hand) latch can be provided on the inside upon specification. Alternatively it can be provided keyed on outside and reverse key on the inside.

NOTE: Master key locks protrude out from the bottom rail, therefore the full opening height cannot be provided (the bottom rail will sit under the lintel in the fully open position).

A shoot-bolt system is also available as an alternative locking option. Padlocks not included.

NOTE: Where door is motorised a manual lock, as discussed above, is not fitted.

OPERATION

Roller Shutters operate by means of a flexible interlocking aluminium curtain, winding onto an overhead drum and guided in aluminium door guides. Series 25 Roller Shutters can be installed 'behind-fix' or 'between-fix' and are available as hand operated or motorised.

HAND OPERATION

Series 25 Roller Shutters are designed for effortless hand operation.

MOTORISATION (OPTIONAL)

Standard motorisation is via a 24v DC motor with a wall push-button that opens and closes the door. The operator plugs into a standard GPO and consists of an emergency manual release mechanism in case of power outage.

Alternatively Series 25 aluminium roller shutters can be motorised using a tubular motor fitted inside the drum. Tubular motors are available in single-phase 240v or 24DC/240v. A manual override mechanism is available to enable manual operation in case of power outage.

Operator selection is dependent on the door size, door weight and the door's application.

The provision of adequate mains power supply and GPO or isolator (as required) to motor location is the responsibility of the client. Wiring from the isolator and commissioning of the door, motor controllers and any ancillary hardware is by client, unless otherwise stated in writing.

Optional extras, such as access control accessories (e.g. remote control, key switches etc.) and photo electric beams for added safety are available upon specification. For further information see Door Operators & Accessories.

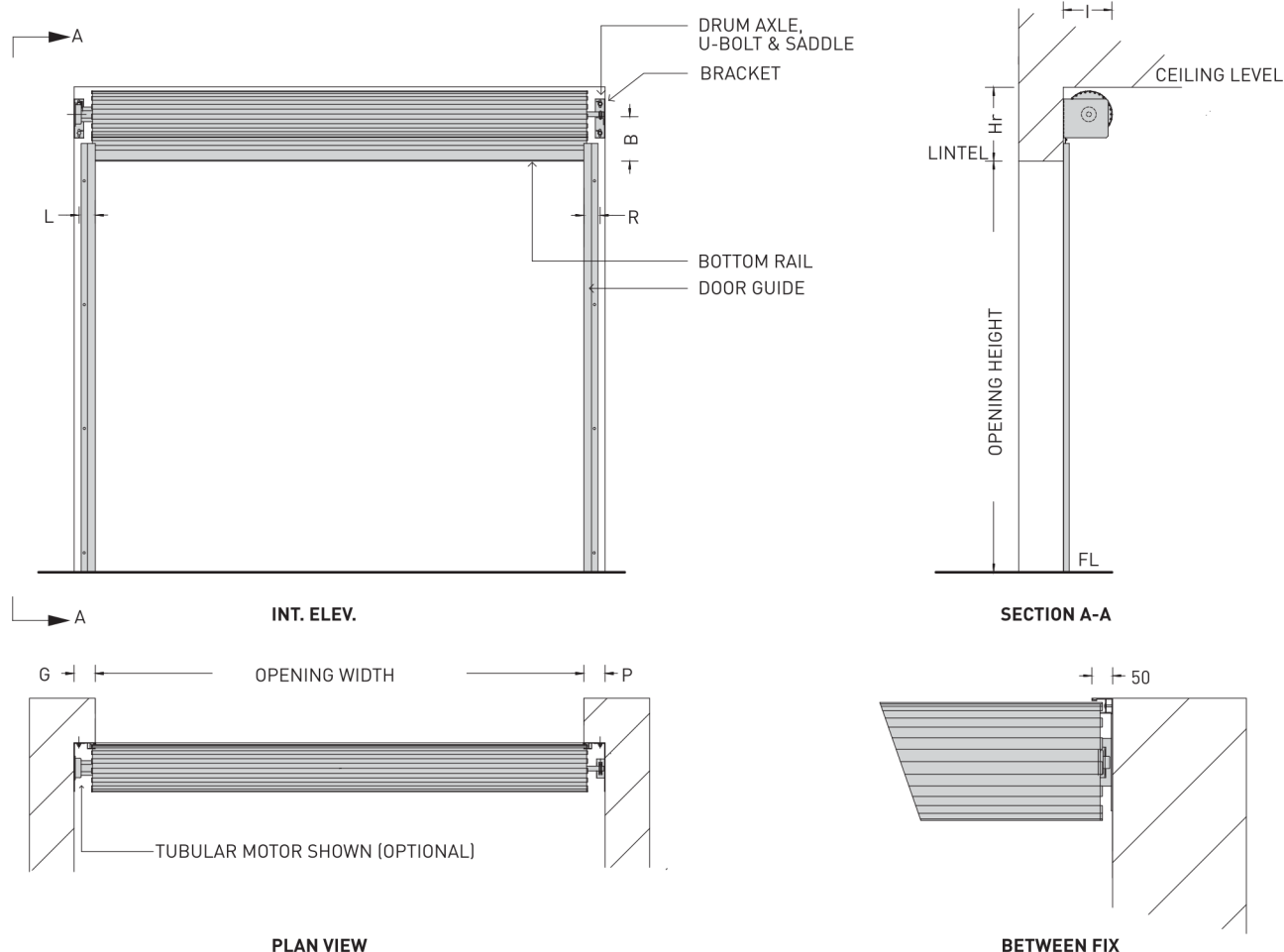
NOTE: Where between-fix is required, tubular motor is used as standard.

OPTIONS

- Between-fix installation

Series 25

Technical Specs: Aluminium Roller Shutters



CLEARANCE DETAILS (Behind Fix)

HEIGHT UP TO	WIDTH UP TO 2.1m			OPERATION	DRIVEN END		PLAIN END	
	Hr	B	I		G*	L	P*	R
1100	420	280	280	HAND OPERATION	P	R	100	70
1500	440	300	300	MOTORISATION (STD)	250	190	100	70
2100	500	320	340	MOTORISATION (TUBULAR)	100	80	100	70

Notes:

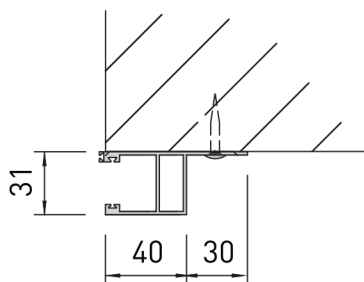
- *For 'between-fix' installation, G & P = 0.
- Total door size must not exceed 4m².

Door Guides

Technical Specs: Aluminium Roller Shutters

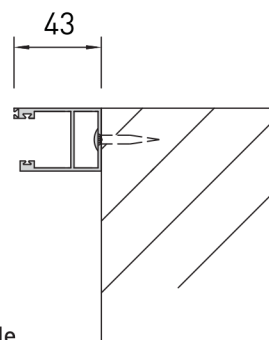
SERIES 25 STANDARD DOOR GUIDES

BEHIND WALL FIXING



Aluminium Guide

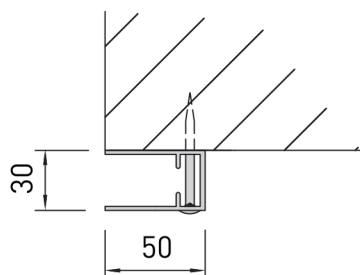
BETWEEN WALL FIXING



Aluminium Guide

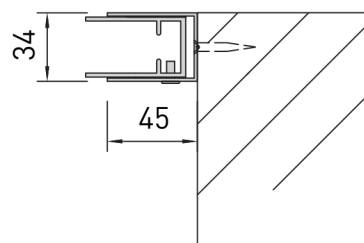
SERIES 63 & CLEARLITE STANDARD DOOR GUIDES

BEHIND WALL FIXING



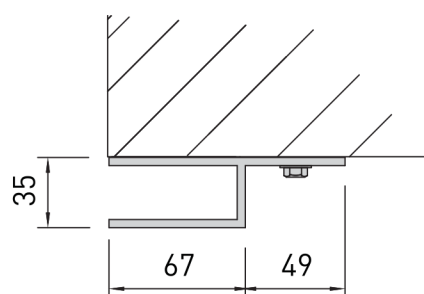
Aluminium Guide

BETWEEN WALL FIXING

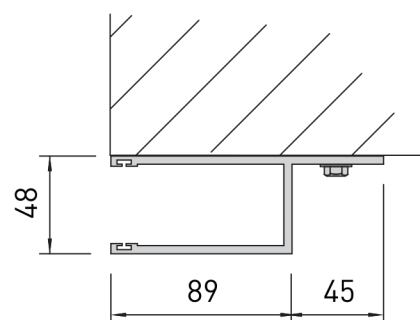


Aluminium Guide With Take Up Channel

PANORAMA STANDARD DOOR GUIDE



SUPA SLAT INSULATED & NON INSULATED STANDARD DOOR GUIDE



ASSA ABLOY

www.airportdoors.com.au

VIC & TAS
69-75 High Street
Melton VIC
PO Box 330
Melton VIC 3337
T: (03) 9971 1444
F: (03) 9971 1466

SA & NT
16 Krawarri Street
Lonsdale SA
PO Box 487
Morphett Vale SA 5162
T: (08) 8326 0466
F: (08) 8384 2501

WA
5 Keates Road
Armadale WA
PO Box 906
Armadale WA 6992
T: (08) 9399 5790
F: (08) 9399 5702

© Copyright 2015 Czapp Pty Ltd trading as Airport Doors.
In line with Airport Doors' research and development
program, Airport Doors reserves the right to change
specifications at any time without notice.